

For Ditec Remote Instruction

This program is very simple when you have an existing remote
You should stand near your Ditec motor or control box within 5
meters or between your gate and garage doors).



Existing remote



Existing remote



Existing remote

www.josindustrial.com

Step 1. Press an existing remote make sure if the old remote works.

Step 2. Insert a paper clip or a needle into the underside tiny pore of your existing remote 5 seconds (see the figure on back of the box)



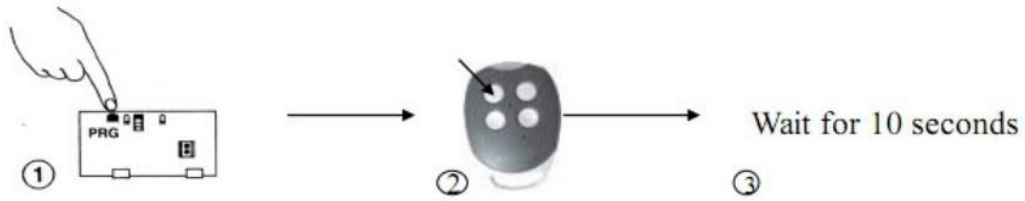
New remote

Step 3. Press the button (with a dot) of your new remote 1 second.

Step 4. Wait for about 10 seconds.

The programming is done, now you can test your new remote if works

NOTICE: if your old remote is not working, please do the following procedures



Press the black program button inside the control box (can be opened by removing the cover) for 5 seconds

Press the button shown 1 second

Wait for 10 seconds

How to delete existing code : for gate, press the little black program button (open the motor box, it is inside) until seeing the red light flashing slowly and release, and press the button again until seeing the light flashing really fast and release, then wait for 10 seconds.

Do the same thing to the gate and garage door (the program button for garage should be on the receiver board)